



## Dual-Vision PTZ Thermal Imaging Camera

### TNC400PT SERIES

Fixed-mount Temperature Monitoring with Infrared and Visual Cameras

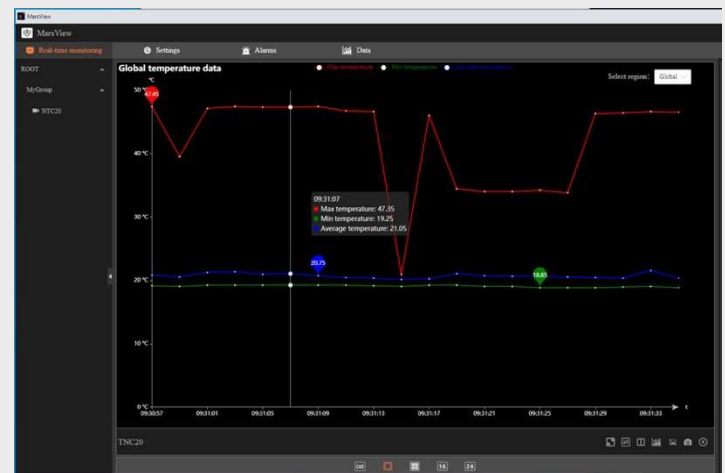
Introducing the TNC400PT series dual-vision thermal imaging camera, equipped with high-definition variable visible light and high-performance infrared thermal imaging. The TNC400Series produces high-definition images with fully radiometric temperature measurement. The 360° rotating gimbal provides a wider monitoring range with 30x zoom. Designed to help safeguard your plant and measure temperature slight differences of your critical assets, it allows you to see problems before they become costly failures; preventing downtime and enhancing worker safety.

[www.planckvisionsystems.com/industrial](http://www.planckvisionsystems.com/industrial)



### Camera Features:

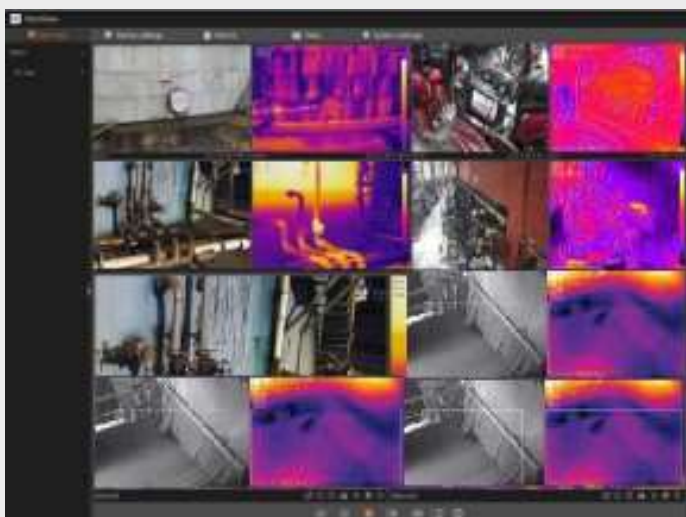
- Supports widely adopted IIoT protocols
- Global temperature monitoring with user defined zones
- Security area-monitoring features
- Supports user defined alarm protocols
- Alarm activated relays and external sensor monitoring
- Temperature accuracy of  $\pm 2^{\circ}\text{C}$
- 360° Rotating PTZ for wider monitoring area



Collect and analyze data

### Typical Applications:

- Process & Manufacturing areas
- Substations & Tunnels
- Storage Facilities
- Data Centers & IT Server Rooms
- Refrigeration Warehouses
- Mass Transit Facilities
- Warehouse Fire Prevention
- AND MORE...



Thermal Camera	Sensor Type	Uncooled Microbolometer Detectors	
	Resolution	640 x 512	336 x 256
	Pixel Size	17µm	
	Spectral Band	8 - 14 µm	
	NETD	<40mk (@25°C, F#=1.0)	
	Focal Length	19mm (13mm, 25mm and other options)	13mm (19mm, 25mm and other options)
	Focus	Fixed	
	Palette	18 adjustable color palettes	
Radiometry	Temperature Range	-20°C - +150°C and 0°C - +500°C	
	Temperature Accuracy	2°C or ±2%, whichever is greater	
Visual Camera	Resolution	1920 x 1080	
	Focus	Automatic/Manual	
	White Balance	Supported	
	Day and Night Modes	Supported	
	Digital Noise Reduction	Supported	
	Zoom	30 x Optical zoom	
	IR Illumination	100 m	
Smart Functions	Zone Measurements	Point temperature, line temperature, area temperature, and others zone measurements	
	Temperature Alerts	4 temperature rules (above high, below low, in between, out of range)	
PTZ	Range	360° continuous pan; -90° to +90° tilt	
	Speed	Pan 0 - 100°/s; Tilt 0-60°/s	
General	Operational Temperature	-20°C to +55°C	
	Operational Humidity	≤90%	
	IP Rating	IP66	
	Power Supply	24V AC	
	Dimensions	351.6 x 258.8 x 275.8mm (13.5 x 10.2 x 10.9 inch)	
	Weight	≤8kg (16lbs)	

\*Disclaimer: Specifications subject to change without notice.