



Explosion-Proof Dual-Vision PTZ Thermal Imaging Camera

TNC400PT-EX SERIES

Rugged & Reliable Explosion-Proof
Pan tilt zoom camera

Introducing the TNC400PT-EX series explosion-proof dual-vision thermal imaging camera. Explosive atmospheres need to be protected from ignition sources. Selecting equipment that meets ATEX requirements is essential.

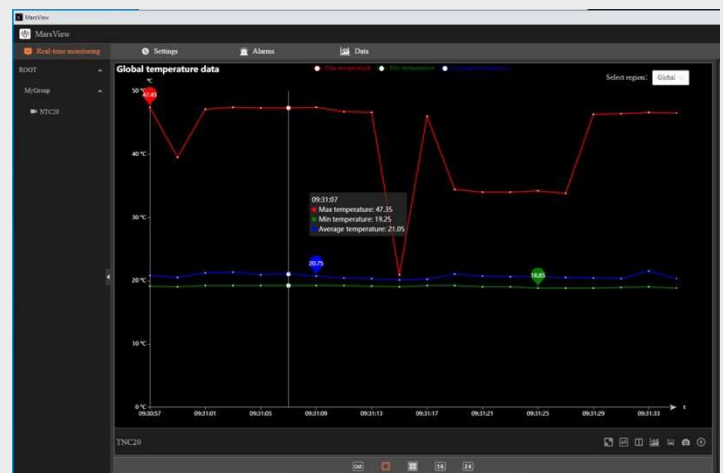
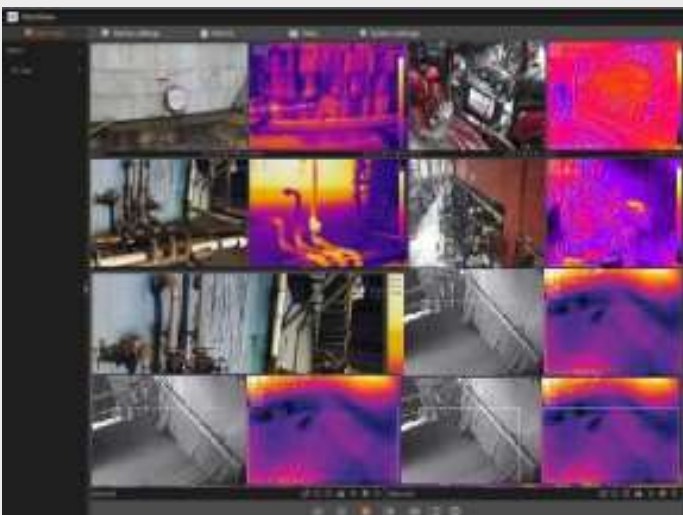
Equipped with high-resolution visible camera and high-performance thermal imaging, the TNC400PT-EX Series produces sharp fully radiometric temperature images. Continuous 360° pan and 130° tilt provide reliable, repeatable absolute positioning. Designed to monitor critical assets in explosive atmospheres, and in the harshest weather conditions, TNC400PT-EX cameras will see problems before they become costly failures; preventing downtime and enhancing worker safety.

www.planckvisionsystems.com/industrial



Camera Features

- 316L stainless steel housing
- 360° continuous pan rotation provides reliable, repeatable absolute positioning
- Supports widely adopted IIoT protocols
- Global temperature monitoring with user defined zones
- Security area-monitoring features
- Supports user defined alarm protocols
- Alarm activated relays and external sensor monitoring
- Temperature accuracy of $\pm 2^{\circ}\text{C}$



Collect and analyze data

Typical Hazardous Zone Applications:

- Chemical Industry
- Oil & Gas Production and Storage
- Offshore/Onshore Oil Drilling Platforms
- Natural Gas Facilities
- Fertilizer Storage Facilities
- Grain Storage
- Coal Mines
- Gas Flare Monitoring Systems
- Textile Industry
- AND MORE...

Thermal Camera	Sensor Type	Uncooled Microbolometer Detectors		
	Resolution	640 x 512	384 x 288	336 x 256
	Pixel Size	17µm		
	Spectral Band	8 - 14 µm		
	NETD	<50mk (@25°C, F#=1.0)		
	Focal Length	19mm (13mm, 25mm and other lens options)	19mm (13mm, 25mm and other lens options)	13mm (19mm, 25mm and other lens options)
	Focus	Fixed		
	Palette	18 adjustable color palettes		
Radiometry	Temperature Range	-20°C - +150°C and 0°C - +500°C		
	Temperature Accuracy	2°C or ±2%, whichever is greater		
Visual Camera	Resolution	1920 x 1080		
	Focus	Automatic/Manual		
	White Balance	Supported		
	Day and Night Modes	Supported		
	Digital Noise Reduction	Supported		
	Zoom	30x (Optical)		
	IR Illumination (optional)	100 m		
Smart Functions	Zone Measurements	Point temperature, line temperature, area temperature, and others zone measurements		
	Temperature Alerts	4 temperature rules (above high, below low, in between, out of range)		
PTZ	Range	360° continuous pan; -90° to +90° tilt		
	Speed	Pan 0.5°/s to 35°/s; Tilt 0.5°/s to 35°/s		
General	Operational Temperature	-20°C to +55°C		
	Operational Humidity	≤90%		
	IP Rating	IP66		
	Power Supply	120V/220V AC (≤200W)		
	Dimensions	448x266x355mm (17.6x10.5x14.0in)		
	Weight	≤35kg (77lbs)		
	ATEX certification	Ex d IIC T6 Gb/Ex tD A21 IP66 T85°C		

*Disclaimer: Specifications subject to change without notice.