



## Dual-Vision PTZ Thermal Imaging Camera

### TNC400PT SERIES

Fixed-mount Temperature Monitoring with Infrared and Visual Cameras

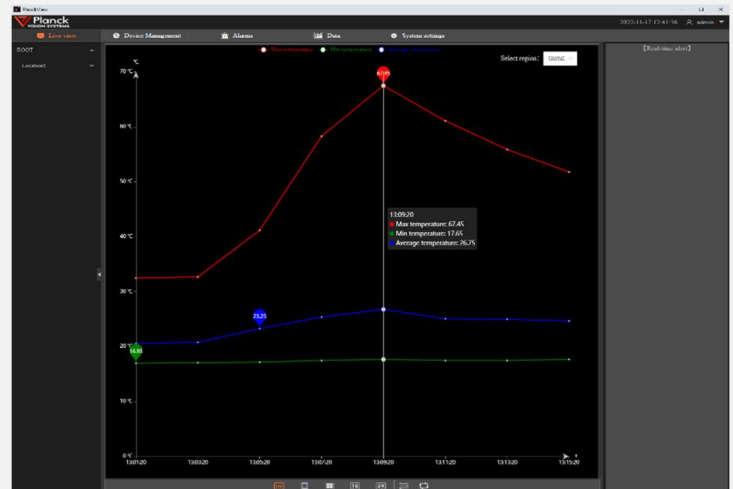
Introducing the TNC400PT series dual-vision thermal imaging camera, equipped with high-definition variable visible light and high-performance infrared thermal imaging. The TNC400Series produces high-definition images with fully radiometric temperature measurement. The 360° rotating gimbal provides a wider monitoring range with 30x zoom. Designed to help safeguard your plant and measure temperature slight differences of your critical assets, it allows you to see problems before they become costly failures; preventing downtime and enhancing worker safety.

[www.planckvisionsystems.com/industrial](http://www.planckvisionsystems.com/industrial)



### Camera Features:

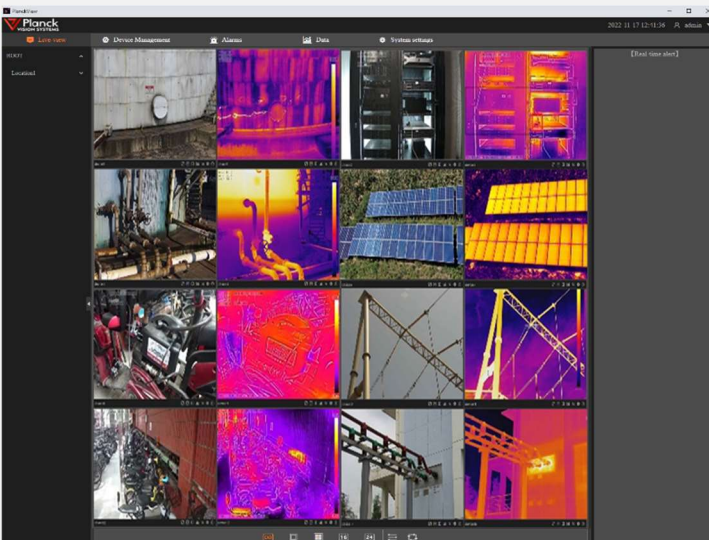
- Supports widely adopted IIoT protocols
- Global temperature monitoring with user defined zones
- Security area-monitoring features
- Supports user defined alarm protocols
- Alarm activated relays and external sensor monitoring
- Temperature accuracy of  $\pm 2^{\circ}\text{C}$
- 360° Rotating PTZ for wider monitoring area



Collect and analyze data

### Typical Applications:

- Process & Manufacturing areas
- Substations & Tunnels
- Storage Facilities
- Data Centers & IT Server Rooms
- Refrigeration Warehouses
- Mass Transit Facilities
- Warehouse Fire Prevention
- AND MORE...



PlanckView™ - POWERFUL ADVANCED CAMERA MANAGEMENT SOFTWARE

### TNC400 Specifications\*

Thermal Camera	Sensor Type	Uncooled Microbolometer Detectors (30 Hz)
	Resolution	640x480
	Pixel Size	12um
	Spectral Band	8 - 14 $\mu$ m
	NETD	<50mk (@25°C, F#=1.0)
	Focal Length options	13.5mm w/ 32°x24° FOV 18mm w/ 24°x18° FOV 25mm w/ 17°x13° FOV 36mm w/ 12°x9° FOV
	Focus	Automatic/Manual
	Palette	18 adjustable color palettes
Radiometry	Temperature Range	-20°C - +150°C and 0°C - +500°C
	Temperature Accuracy	2°C or $\pm$ 2%, whichever is greater
Visual Camera	Resolution	1920 x 1080
	Focus	Automatic/Manual
	White Balance	Supported
	Day and Night Modes	Supported
	Digital Noise Reduction	Supported
	Zoom	30 x Optical zoom
	IR Illumination	100 m
Smart Functions	Zone Measurements	Point temperature, line temperature, area temperature, and others zone measurements
	Temperature Alerts	4 temperature rules (above high, below low, in between, out of range)
PTZ	Range	360° continuous pan; -90° to +90° tilt
	Speed	Pan 0 - 100°/s; Tilt 0-60°/s
General	Operational Temperature	-20°C to +55°C
	Operational Humidity	$\leq$ 90%
	IP Rating	IP66
	Power Supply	24V AC
	Dimensions	351.6 x 258.8 x 275.8mm (13.5 x 10.2 x 10.9 inch)
	Weight	$\leq$ 8kg (16lbs)

\*Disclaimer: Specifications subject to change without notice.