



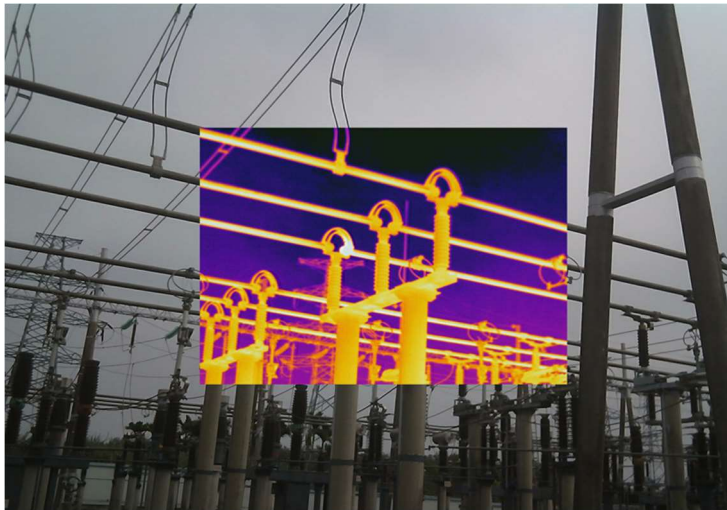
Dual Vision Thermal Networking Camera

TNC200 SERIES

Introducing the TNC200 Series fixed-mount temperature monitoring camera with thermal & visible sensors. The 200 series offers a choice of thermal sensor resolution, optical field of view and body type that is right for your application.

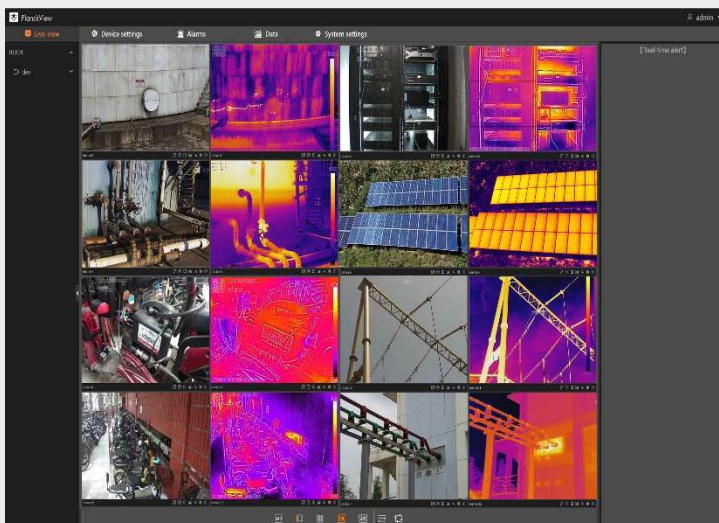
The onboard analytics of the TNC200 Series allows monitoring of thermal conditions to safeguard against unexpected failures in electrical and mechanical installations. A simple web configuration tool is used to define alarm conditions, relay controls, and network communication protocols. PlanckView camera management software and a full function SDK are also available for the 200 series.

www.planckvisionsystems.com/industrial

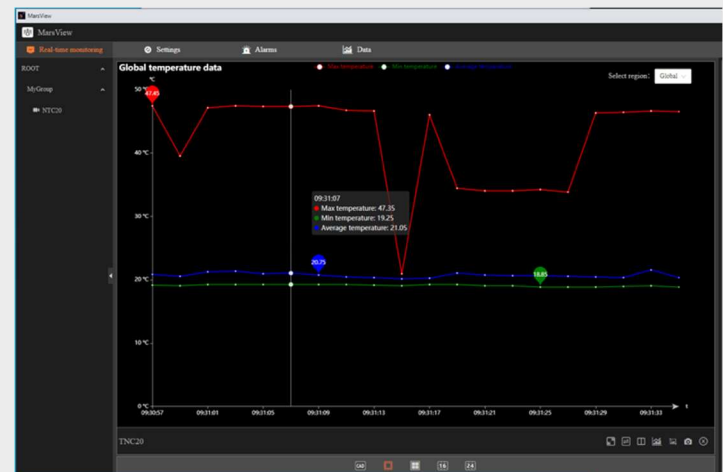


Cameras Features

- Supports widely adopted IIoT protocols
- Global and regional temperature monitoring
- Security area-monitoring features
- Supports user defined alarm protocols
- Alarm activated relays and external sensor monitoring



PlanckView™ - POWERFUL ADVANCED CAMERA MANAGEMENT SOFTWARE



Collect and analyze data

Typical Applications:

- Process & Manufacturing areas
- Substations & Tunnels
- Storage Facilities
- Data Centers & IT Server Rooms
- Refrigeration Warehouses
- Mass Transit Facilities
- AND MORE ...

Thermal Camera	Sensor Type	Uncooled Microbolometer Detectors
	Response Waveband	7.5-13.5 μm
	NETD	<50mk (@25°C, F#=1.0)
	Temperature Accuracy	$\pm 2^\circ\text{C}$ or $\pm 2\%$
	Resolution/Pixel Size	See Resolution / Optics Table
	Focal Length/FOV	See Resolution / Optics Table
	Focus	Fixed focus
	Palette	18 adjustable color palettes: Iron red, rainbow, white heat, black heat, etc.
Visible Camera	Resolution	1920 x 1080
	Focus	Fixed focus
	White Balance	Supported
	Day and Night Modes	Supported
	Noise Reduction	Supported
	IR Illumination	Distances up to 30m
Smart Functions	Fire Detection	Supported
	Temperature Monitoring	Up to 12 measurement zones
	Temperature Alerts	4 temperature rule types (above high, below low, in between, out of range)
	Perimeter Detection	Intrusion, line crossing, region entrance, region exiting
Network	Network Protocols	ICMP, TCP, UDP, RTP, RTSP, DHCP, PPPOE, UPNP, DDNS, ONVIF, 802.1x, FTP, HTTP
	User Rights	Three levels of user rights: administrator, advanced operator, operator
	Security Measures	User authentication (ID and PW)
	Video Compression	H.264/H.265
	Audio Compression	Audio G.711u/Intercom G.722
	Mainstream Visible	Optical: 1080p/720P with 30fps
	Sub Stream	D1/CIF 30fps can be set
System Integration	Audio Input / Output	1 Channel
	Communication Interface	RJ45 10M/100M self-adaptive; RS485
	Alarm Input / Output	1 Channel
	Analog Video Output	PAL/NTSC/BNC
	Onboard Storage	Optional
	Working Temperature	-20°C to +70°C
General	Working Humidity	$\leq 90\%$ non-condensation
	Power Supply	DC12V / POE

*Disclaimer: Specifications subject to change without notice.

Resolution / Optics

Resolution	384x288	640x512
Pixel size	17 μm	12 μm
Focal Length / FOV	4mm / 78°x63°	4.1mm / 86°x74°
	9.7mm / 37°x28°	9.1mm / 46°x37°
	13mm / 28°x21°	13mm / 33°x27°
	19mm / 20°x15°	19mm / 23°x18°
	25mm / 15°x11°	25mm / 17°x14°

BB – Body Type

BB	BU (Bullet)	PP (Planck Pro)
IP Rating	IP67	IP66

IO – Interface

IO	FF	IP
Power (DC12V)	√	√
LAN	√	√
POE	√	√
Analog Video Out	√	
RS485	√	
Alarm In/Out	√	
Audio In/Out	√	

Model number: TNC200-**RES-FL-BT-IO**

RES = sensor horizontal resolution

FL = focal length

BT = camera body type

IO = interface options