

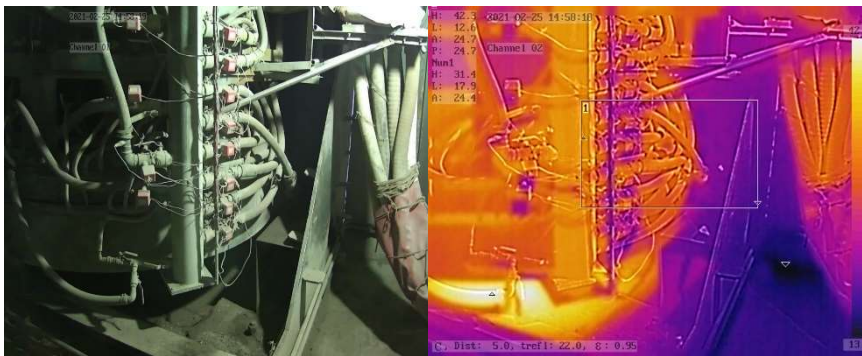
# Dual Vision Thermal Networking Camera

## TNC10

Fixed-mount Temperature Monitoring Camera with Thermal and Visible Sensors

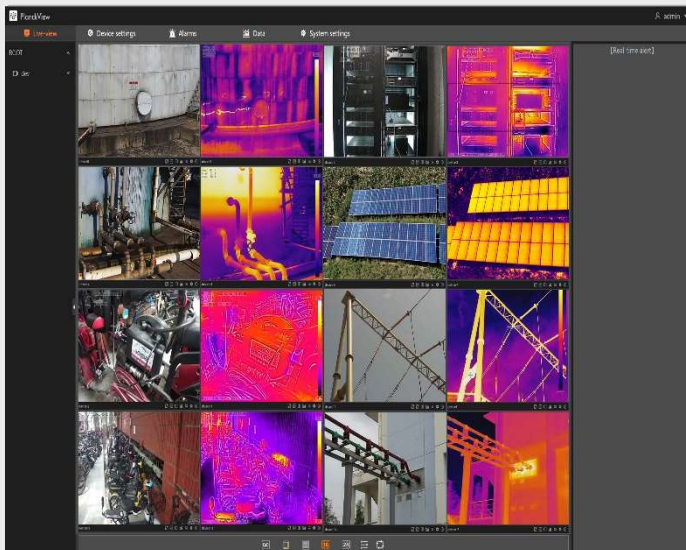
Designed for affordable 24/7 thermal monitoring of all your critical equipment and other valuable assets. It helps you see problems before they become costly failures, preventing downtime, and enhancing worker safety. Ideal for Process Control and Monitoring, Quality Assurance, Condition Monitoring, and Early Fire Detection.

[www.planckvisionsystems.com/industrial](http://www.planckvisionsystems.com/industrial)

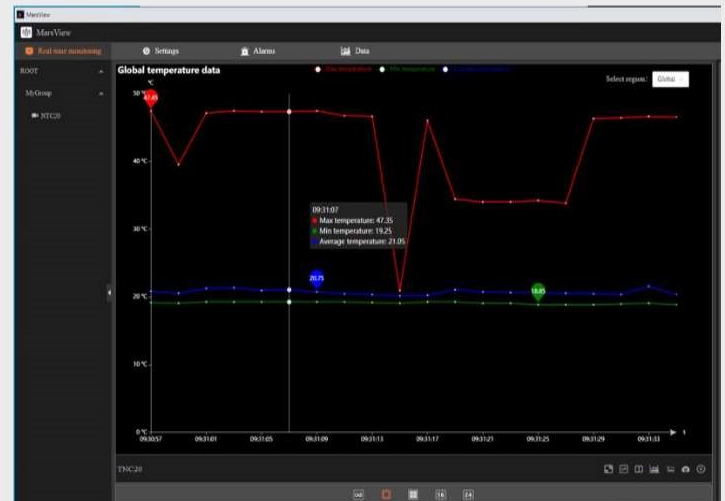


## Cameras Features

- Supports widely adopted IIoT protocols
- Global temperature monitoring with user defined zones
- Security area-monitoring features
- Supports user defined alarm protocols
- Alarm activated relays and external sensor monitoring



PlanckView™ - POWERFUL ADVANCED CAMERA MANAGEMENT SOFTWARE



Collect and analyze data

## Typical Applications:

- Process & Manufacturing areas
- Electrical Panel & Cabinets
- Storage Facilities
- IT Server Rooms
- Perimeter Security
- AND MORE ...

Thermal Camera	Sensor Type	Uncooled Microbolometer Detectors
	Resolution	160 x 120
	Pixel Size	12µm
	Response Waveband	7.5-13.5 µm
	NETD	< 50mk (@25°C, F#=1.0)
	FOV	57° x 44°
	Focus	Fixed
	Palette	18 color palettes and fusion with visible
Visible Camera	Resolution	1920 x 1080
	FOV	90.9°x48.0°
	Focus	Fixed
	White Balance	Supported
	Day and Night Modes	Supported
	Digital Noise Reduction	Supported
	IR Illumination	Distances up to 30m
Network	Network Protocol	ICMP, TCP, UDP, RTP, RTSP, DHCP, PPPOE, UPNP, DDNS, ONVIF, 802.1x, FTP, HTTP
	User Rights	Three levels: administrator, advanced operator, operator
	Security Measures	User authentication (ID and PW)
	Video Compression	H.264/H.265
	Audio Compression	Audio G.711u/Intercom G.722
	Mainstream	Optical: 1920x1080 with 30fps Thermal: 160 x 120, 9fps
	Sub Stream	Optical: D1/CIF 30fps can be set. Thermal: 160 x 120, 9fps
Smart Functions	Fire Detection	Supported
	Temperature Monitoring	Up to 12 measurement zones
	Temperature Alerts	4 temperature rules (above high, below low, in between, out of range)
	Temperature Range	Temperature range -10°C to 400°C
	Temperature Accuracy	+10°C to +150°C: ±5°C or ±5%, whichever is greater -10°C to +400°C: ±10°C or ±10%, whichever is greater
	Perimeter Detection	Intrusion, line crossing, region entrance, region exiting
System Integration	Audio Input	1 Channel
	Audio Output	1 Channel
	Communication Interface	RJ45 10M/100M self-adaptive; RS485
	Alarm Input	1 Channel
	Alarm Output	1 Channel
	Analog Video Output	PAL/NTSC/BNC
	Built-in Onboard Storage	Optional
General	Working Temperature	-20°C to +55°C
	Working Humidity	≤90% non-condensation
	IP Rating	IP67
	Power Supply	DC12V/POE
	Power Consumption	≤10W (without heater)
	Dimensions	101 x 81 x 246 mm
	Weight	≤1 kg

\*Disclaimer: Specifications subject to change without notice.